

SureBuilt

Concrete Forms & Accessories



Concrete Construction Products



Table of Contents

Handset Forms	3
SurePly Panels and Fillers	
Ties and Hardware	
Job Built Forming Systems	4
Coil Ties	
Self-Centering Tie and Bracket	
Clamp Forms	5
Panels and Components	
Ties and Hardware	
Heavy Forming	6
Taper Ties and Hardware	
She-Bolts and Hardware	
Euro Ties and Hardware	
Large Gathering Members.....	7
Butt Plate Waler	
Articulated Waler	
Sure Beam	
Precast	8
Tilt-Up	9
Wall Bracing	10
Ground Anchor Systems	11
Self Rising CoreForm Systems	12
Stud Rail	
Thermal Break	
Staybox	
Formliners & Specialty Forming	13
American Formliners	
Steel Circular Column Forms	
Friction Collars	
Post Shores & Shoring	14
Post Shores	
SPAN-X	
Frames and Crossbraces	
Bridge Deck & Fiberglass Reinforcement Bar	15
Interior, Exterior, & Adj. Hangers	
Bridge Overhang Brackets	
GFRP Deformed Fiberglass Bar	
Rebar Support	16
Slab Bolster & Beam Bolster	
Individual High Chairs	
Plastic Bolster and Chairs	
Floor Systems & Load Transfer	17
Basket Dowel	
Taper Dowel	
Steel Edge Nosing	
Floor Systems & Load Transfer	18
Dowel Sleeves	
Paving Dowels & Baskets	
Steel Stakes & Misc.	19

SureBuilt Locations

California - (714) 871-9434
130 N. Gilbert St
Fullerton, CA 92833

Florida - (813) 606-5727
9225 Bay Plaza Blvd Ste 407
Tampa, FL 33619

Florida - (813) 606-5727
4000 North Combee Rd
Lakeland, FL 33805

Illinois - (708) 493-9569
2525 Armitage Avenue
Melrose Park, IL 60160

Illinois - (630) 231-6900
1200 N Prince Crossing Rd
West Chicago, IL 60185

Illinois - (877) 533-5842
645 Airport Rd
Centralia, IL 62801

Indiana - (812) 248-9750
305 S New Albany St
Sellersburg, IN 47172

Mississippi - (601) 855-7242
576 Church Rd
Madison, MS 39110

North Carolina - (919) 553-7124
13308 US-70 BUS
Clayton, NC 27520

Pennsylvania - (888) 734-5561
525 E Mifflin St
Lebanon, PA 17046

Tennessee - (423) 942-4090
150 Hickman Rd
Jasper, TN 37347

Texas - (713) 413-4134
301 W. Foxshire Ln
Houston, TX 77053

SurePly™ Handset



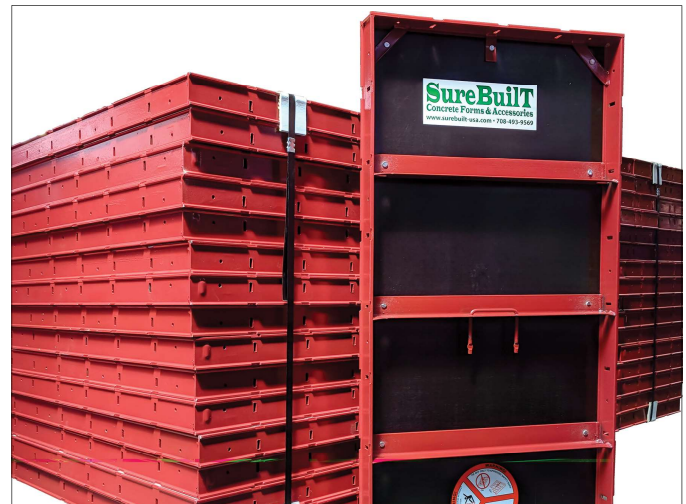
Overview

The #1 USA BUILT CONCRETE FORM

Two 2x8 panels are equal to the contact area of a 4x8 sheet of plywood, yet the SurePly forming system can be moved, placed, tied, poured and stripped **75% faster than job-built plywood forms.**

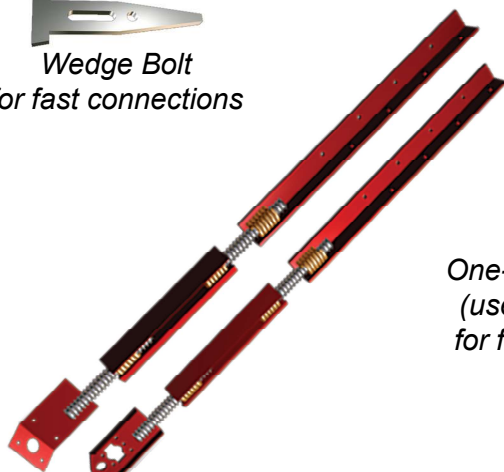
From house foundations to power plants and tanks. Small or large projects, simple or cut-up layouts, and handset or gangform applications, will benefit from these SurePly labor-saving features:

- High-carbon 55,000 PSI structural steel frame
- Rugged frame with 45% more weld than others
- Full 2"x2" crossmember support angle every foot
- Allowable 1,000 psf load-rated system
- Added dado slots make step footings easy
- Integral handle for carrying and setting
- Baked-on powder paint in 12 optional colors
- Long-lasting 1/2" Birch or optional HDO plywood
- Panels in heights from 3' to 10', width 24"
- Fillers in heights from 3' to 10', widths 1" to 22"
- Inside corners in heights from 3' to 10', 6"x6" size
- Simple hardware for faster assembly
- Straight or curved walls




Application Guide


Wedge Bolt
for fast connections



One-Piece Waler Clamp
(used with 2x4 lumber)
for formwork alignment


HD Turnbuckles
(used with 2x4 lumber)
for plumbing forms



HD Loop Tie



X-Flat Tie



Base Tie

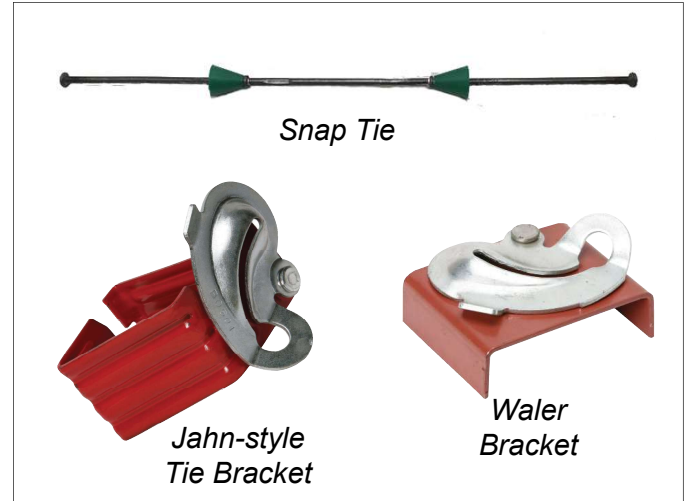
Snap Tie System



Job-built forming with 3/4" plywood, 2x4 lumber, Snap Ties and Jahn-style Brackets is popular on many construction sites.

Short-end (SE) Snap Ties are available for single waler applications. Long-end (LE) Snap Ties are available for waler/strongback combinations. Odd-end (OE) Snap Ties are available for forming with a single waler on one side and waler/strongback combination on the other side.

<https://surebuilt-usa.com/docs/Snap-Ties.pdf>

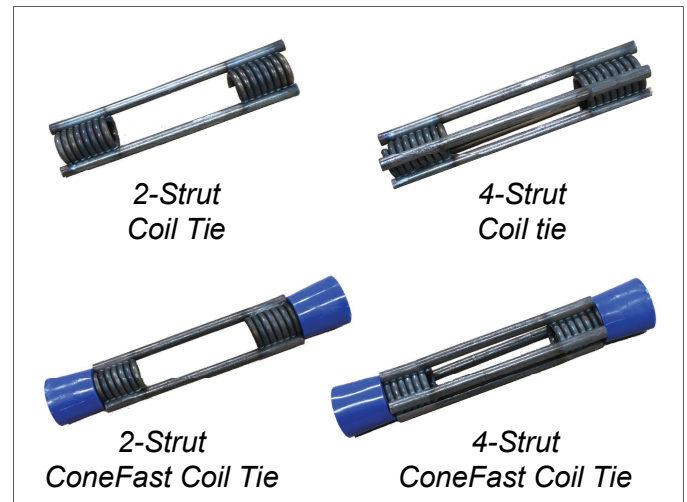


Coil Ties



The 2-Strut and 4-Strut designs, in standard and heavy-duty capacities, are designed for job-built plywood forming. The coil ties are resistance-welded for reliable performance and safety.

Coil Ties are available with optional cones, waterseals, galvanized finish or custom specification on request. Other related products include Coil Rod, Coil Nuts, Coil Nut Washers, Flat Washers and Coil Bolts.



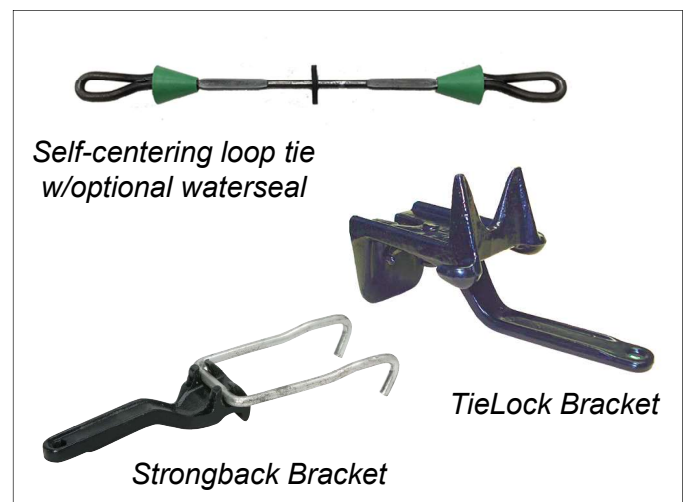
TieLock™ System



A self-centering loop tie and TieLock Bracket, with 3/4" plywood as the form face and 2x4 lumber as the waler, creates an economical concrete forming system.

The self-centering tie sets the wall dimension, sits flush up against the plywood face, and breaks back cleanly within the plastic cone.

Typical tie spacing is 16"x24" for most concrete walls. The TieLock Bracket hooks the tie loop, while securely holding the 2x4 lumber walers. A Strongback Bracket hooks onto the TieLock Bracket when needed.



SoloForm™ Forming System



Overview

The **strongest** handset system on the market is rated at 1,500 psf, and doubles as a gangform system, with the addition of larger 4' x 8', 6' x 8', and 8' x 8' panels. Common components minimize inventory and maximize productivity, no matter the forming application.

Panels

- Large: 8' x 8', 6' x 8', 4' x 8'
- Multipurpose: 36" x 8', 36" x 6', 36" x 4'
- Standard Panels 8" - 30" wide by 4', 6', and 8'
- Typical Gang: 8' x 10' up to 8' x 24'
-

Simple Connections

A small, lightweight Wedge Clamp is used to connect the panel joints. The clamp can be positioned at any joint with one hand, then secured with a hammer strike. This simple connection makes assembly and any reconfiguration quick and efficient.

Lightweight Design

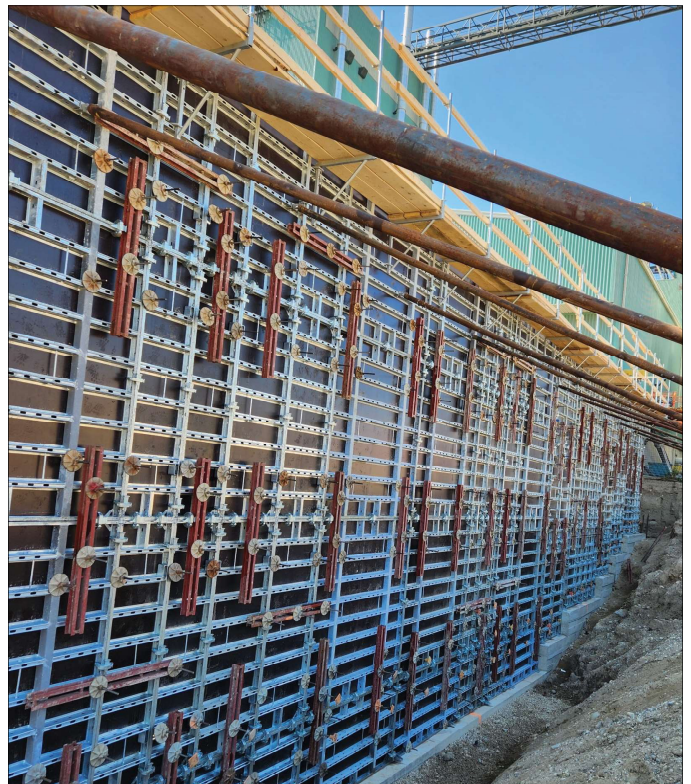
Panels only weigh an average of **8.5 lb / ft**, and total system appx 10.5 lb / ft. making it lightweight, yet exceptionally durable. The 1,500 psf rating, makes it the strongest handset system on the market. While the larger 8' x 8' gangform panel weighs **8.75 lbs** per square foot, it only requires four taper ties for a 1,500 psf rating. This lightweight design provides both modular versatility and strength.

Heavy-Duty Components

Long service life is virtually guaranteed with heavy-duty components. The side rail and cross members are rolled from 50 ksi steel. Precision welding turns individual components into a single structural frame. Each frame is further reinforced with corner blocks for durability. The completed frame is then galvanized to resist corrosion.

American-Made

The entire system is sourced and manufactured in the United States. From the steel shapes, to rolling the frame profile, to automated welding, to hot-dip galvanizing, to birch plywood facing, and a thorough final inspection, SoloForm is the only concrete forming system you will ever need.



Application Guide

Taper Ties and Hardware



Taper Ties are used in forming situations where the ties are completely removed from the concrete after the pour has cured. Commonly used with gangform systems, Taper Ties enable contractors to efficiently assemble and strip formwork.

Taper Ties are squared-off at each end, allowing the tie to be turned with a wrench during the removal process. The tie can also be struck on the squared-off end of the smaller side with a hammer for removal from the gangform and wall.



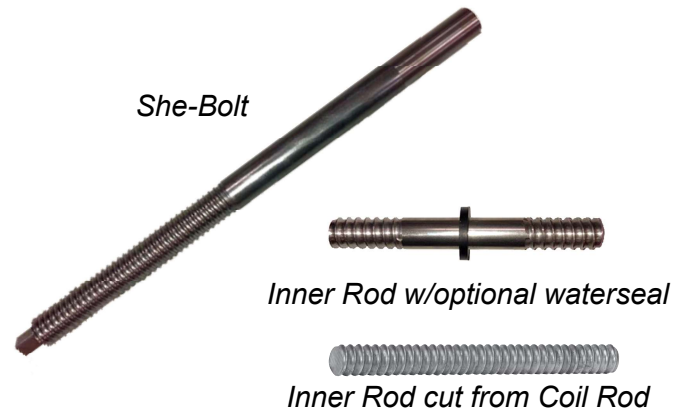
1/2" with 7.5 kip SWL to 1-1/4" with 50 kip SWL

She-Bolts and Inner Rods



She-Bolts are heavy duty, reusable forming ties used for medium and heavy concrete forming applications. She-Bolts are used in combination with an Inner Rod or Coil Rod cut-to-length on the job site.

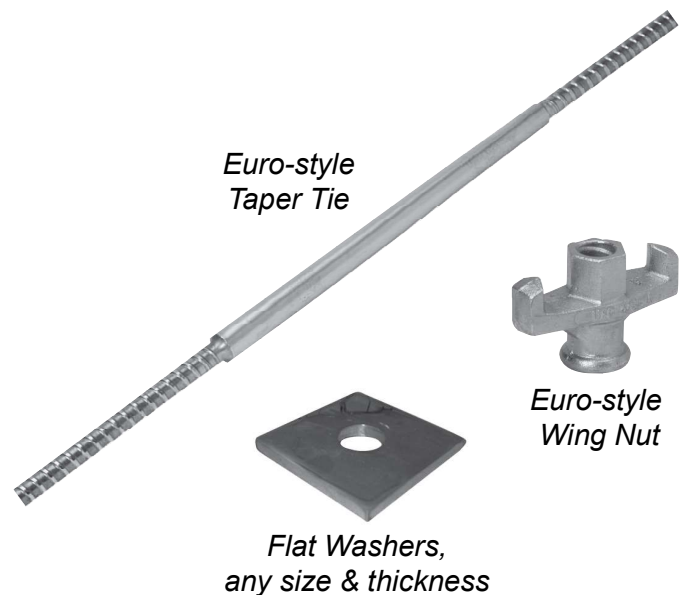
The expendable Inner Rod joins two She-Bolts to create the form tie assembly. A Flat Washer and Wing Nut placed on the threaded end transfers the concrete load to the walers.



Euro Ties and Hardware



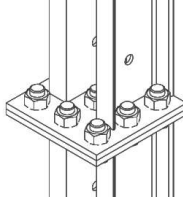
Standard 15mm and 20mm threaded ties are compatible with European-style forming systems and designed for fast gangforming. Each end of the tie is threaded to the same diameter so the Wing Nut works on either end. Taper Ties, She-Bolts and Inner Rods are available in sizes to meet project specifications.



Butt Plate Walers



The Butt Plate Waler is one of the most popular waler designs. Double 6" steel channel has 13/16" holes for 3/4" bolts, spaced on 6" centers for waler attachment hardware. The channels are positioned back-to-back and separated by a 3" gusset or spacer sleeve. The 1/2"x9"x9" steel plates have holes for end connections so different waler lengths can be combined. Butt Plate Walers are available in 2', 3', 4', 6', 8', 10' and 12' lengths.



Note: Pafco- and Symons-style double-channel steel walers are also available.



Articulated Walers - Circular Wall System

Start with 3/4" plywood, aluminum joists or wood beams you may already own, connecting hardware, and the Articulated Waler, then build and "flex" the gang to any radius from 20' to 180'.



The adjustment screws make it easy to reconfigure the forming radius. Standard taper ties or she-bolts, with flat washers and nuts, complete the forming assembly.

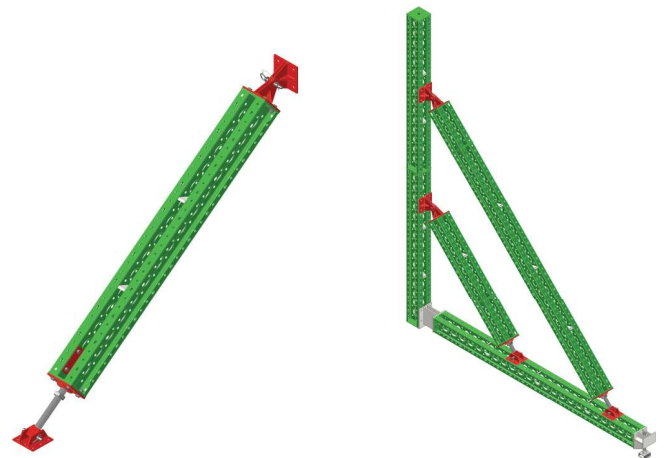


Sure Beam

The Sure Beam is a HD infrastructure beam that complements the advantages of the standard SureBuilt forming systems. The unique hole pattern makes the Sure Beam adaptable to most forming and shoring configurations.

The ability to bolt to all the flanges adds efficiency. When bolted end-to-end as a continuous beam, the connection develops the full strength of the resulting stud.

Common uses for the Sure Beam include: brace, waler, strongback, shoring, aligner, truss, and other forming and shoring applications.



The Pivot Bracket provides the connection between the Soldier beam brace and forming system when bolted to the end of the Sure Beam.

Precast



A precast concrete component is formed in a reusable mold, cured under controlled conditions, transported to the construction site, and lifted into position. Each component will require anchors, connectors, inserts, and lifting hardware depending on the application.



Anchor Rail HD

Cast-in-place galvanized channel for positioning and anchoring mechanical straps and supports.

Coil Inserts

Loop, flared, double-flared, criss cross, L-leg, thin slab and wing types for precast panels.

Column Connector

Column-to-base connection eliminates the need for panel bracing and welding.

Edge Connector

A rebar-winged embed tied to reinforcing steel with "flat" positioned at the panel edge for later welding.

Ferrule Inserts

Loop, flared, double-flared, criss cross, L-leg, thin slab and wing types for precast panels.

Groutec

Mechanical splicing system for horizontal and vertical precast elements

Lifter

Ring-shape design, available in 2.5, 5.0 or 10.0 ton capacities, rotates through the lifting insert.

Slant Anchor (U.S. Patent Pending)

Unique anchor provides simple, grouted, panel-to-foundation connection without welding or bolting.

Straight Leg Anchor

An insert with anchor loop, steel legs and disposable plastic former for handling precast panels.

Wall Connector

Bolted wall-to-base and wall-to-wall connection eliminates the need for panel bracing and welding.

Wire / FRP Truss

GFRP or steel truss joins a bottom layer of concrete, a middle layer of insulation, and a top layer of concrete into one unit.



Anchor Rail



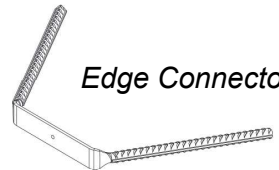
Ferrule Insert
Loop Type



Coil Insert
Criss Cross Type



Uni-Lift Anchor



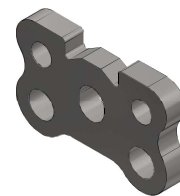
Edge Connector



Groutec



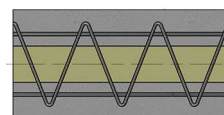
Column
Connector



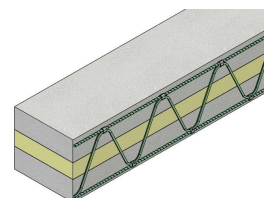
Erection Anchor



Slant Anchor



Wire Truss



FRP Truss

Tilt-Up



A tilt-up concrete panel is formed on the construction site, lifted into position, and braced until the structure is completed. Each panel requires anchors, connectors, inserts and lifting hardware depending on the specific design and application.

Brace Insert

Standard panel insert with non-rusting plastic feet and locator plug for subsequent brace attachment.

Construction Adhesive

Inverted spray cans and canisters of Construction Adhesive as well as All Weather Adhesive in 100% solids sausages.

Edge Form Brackets

Reuse instead of cutting lumber blocks for bracing and start forming faster. Construction Adhesive available.

Lifter

Ring-shaped design, available in 2.5, 5.0 or 10.0 ton capacities, rotates through the lifting insert.

Panel Base Connector (U.S. Patent No. 11,891,790)

Unique anchor provides simple, immediate, bolted panel-to-foundation connection without welding.

SureLift (SL) Insert (U.S. Patent Pending)

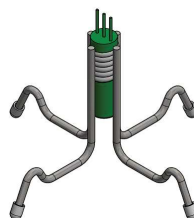
An effective lifting insert with disposable former and adjustable plastic feet for height adjustment.

Tilt-Up Profiles

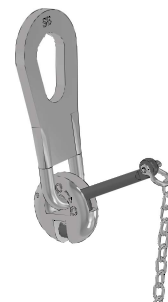
Detailed lines, chamfered edges, and smooth reveals, for a better tilt-up panel appearance.

XL Insert

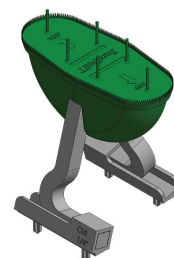
An effective lifting insert with disposable former



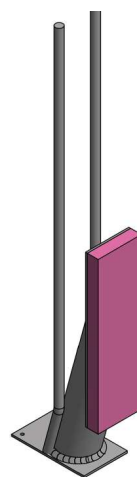
Brace Insert



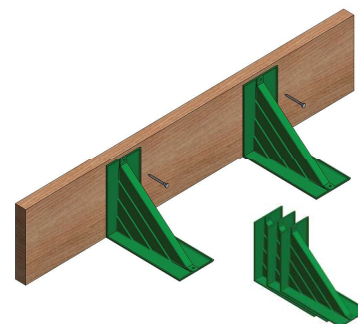
Lifter



SL Insert



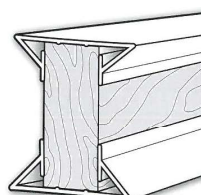
Panel Base Connector



Edge Form Brackets



XL Lift Insert



Tilt-Up Profile Double Chamfer



Construction Adhesive

Call SureBuilt for Engineering Services

Modular Pipe Braces - NEW PATENT**Modular Pipe Braces**

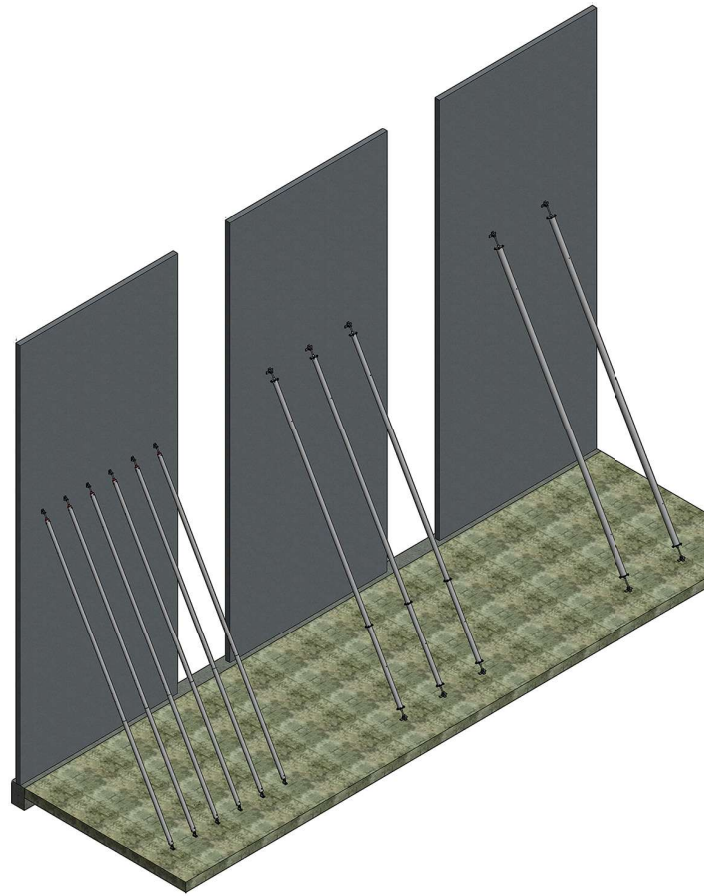
Fewer Braces, more Savings. The Modular Brace savings are compounded when you consider all the small, but related steps, in the bracing process. There are 50% fewer brace inserts, 50% fewer brace attachments, 50% fewer bolts, 50% fewer man-lifts, and 50% fewer shipments.

As panels increase in height and weight, you can use an even longer version of the Modular Brace. With an 8-5/8" diameter, these components provide the capacity for the increasing panel sizes.

You can still reconfigure the brace components with plate-to-plate bolting and always have the size you need, while reducing inventory.

Modular Pipe Braces have just five basic components that can be configured into 42', 52' or 62' sizes. These sizes, with greater capacities, reduce the number of braces needed for large panels.

The 6-5/8" diameter Modular Braces can be increased in length with 5' and 10' components. The 8-5/8" diameter Modular Braces can be increased in length with the 10' components.



A typical 60' x 25' Panel you would need:
6 conventional 5-1/2" dia. braces 42' compared to
3 Modular Braces (6-5/8" dia.) 42' or only
2 Modular Braces (8-5/8" dia.) 42'

Pipe Braces

The all-steel pipe braces are available in lengths from 7'-6" to 62'-6" and designed for forming, precast and tilt-up bracing applications.

Adjustable Pipe Braces have a telescoping pipe for rough dimension and a 6" threaded connecting shoe for final adjustment and anchoring. There are three sizes, ranging from 7'-6" to 40'-0".

Heavy-Duty Fixed Pipe Braces are large diameter pipes with greater capacity. There are three sizes of Heavy-Duty Fixed Pipe Brace, including extensions, ranging from 31'-0" to 62'-6".



Call SureBuilt for Engineering Services

Bracing Accessories



Helical Ground Anchor

A 7' reusable steel shaft with helix plates that "screws" into the ground to anchor pipe braces. The HGA has 2 chisel flight finish plates at the bottom and 1 straight flight finish plate.

Helical Ground Anchor Extension

A 4' reusable steel shaft with 1 straight flight finish helical plate. The HGA Extension is used when the needed psi is not reached with the 7' HGA is installed.

HGA Bracket (U.S. Patent Pending)

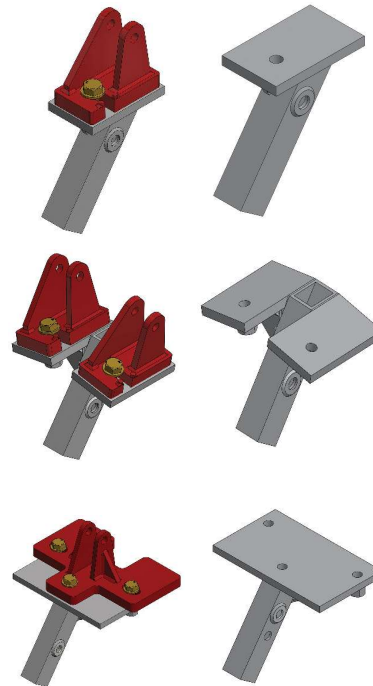
Load-rated device for quickly connecting tilt-up pipe brace shoes to helical ground anchors in 1-Bolt, 2-Bolt, and 3-Bolt configurations.

Standard Transitional Brace Connector (STBC)

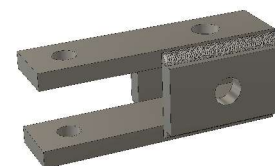
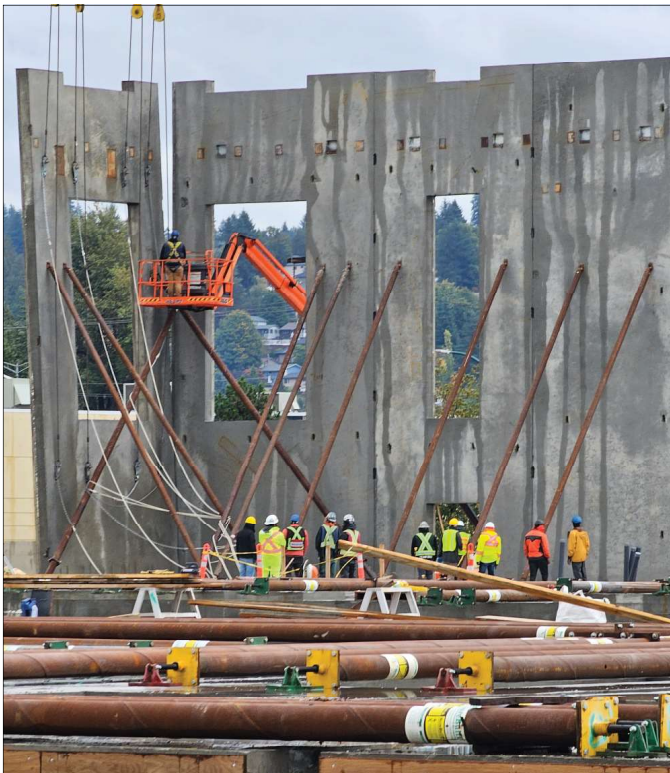
Allows threaded rod at end of brace to be connected to the HGA or HGA Extension



Pipe Braces attached to HGA Bracket for Double Brace Shoe on a Helical Ground Anchor



HGA Bracket configurations with and without brace shoe.



Standard Transitional Brace Connector (STBC)

Self-Riser



The Self-Riser System is a cost-effective core forming method, reducing labor, and increasing productivity. This system allows core formwork to be lifted without a crane. Simply flipping a few switches moves the entire assembly, including platforms, plus interior and exterior formwork, up another story.

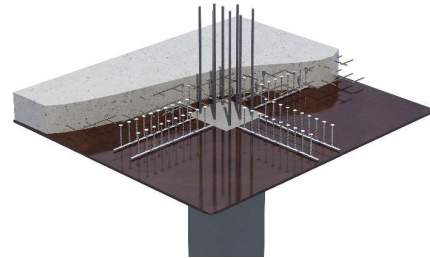
The Self-Riser System allows you to construct cores faster and more efficiently than other conventional core forming construction methods.



Stud Rail



Stud Rail is a double-headed stud anchor (DSA) reinforcement system, typically used for concrete deck-to-column connections to transfer the load further into the concrete deck, create a larger shear area around the column, and resist punching shear forces.



Thermal Break



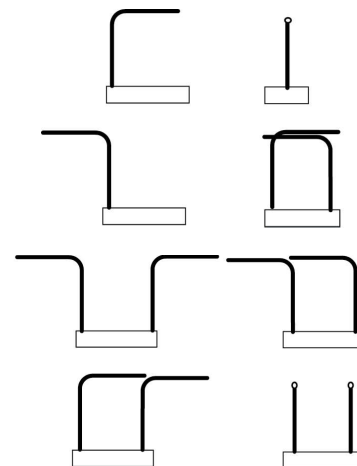
High-density foam with low conductivity concrete creates a thermal break on concrete balconies. This combination reduces energy demand by up to 15% without compromising structural integrity of the balcony.



Staybox



The Staybox system is prebent rebar and a formed metal box that creates a single “pull out” bar assembly. The assembly is used as a keyway and lap splice between concrete construction joints, including slab, deck, wall, beam and column intersections.



Formliners



100+ patterns and textures are being specified by architectural / engineering firms and state DOTs.

Single use HIPS, multiple use ABS (up to 10), and high reuse (40-50 PE, 100+ PPE) formliners available

American Formliners provides several advantages:

- 40+ years of made in USA formliner manufacturing
- State-of-the-art manufacturing
- Cost-effective pricing and nationwide availability
- Custom capability for unique applications



Unitec



Universal shear-bolt coupling system for the connection of concrete reinforcement bars from ASTM #4 to #18. The Unitec rebar splicing system can be assembled onsite using a standard impact wrench



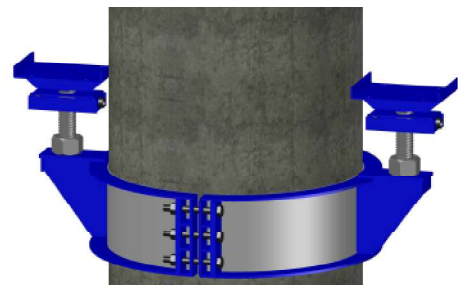
Steel Circular Column Forms

SureBuilt has one of the largest rental fleets in North America and our primary focus is manufacturing products that will not only meet but exceed our customers expectations. Stock rental fleet consists of 180° sections in 1', 2', 4', and 8' lengths with diameters from 12" to 96". Sale only for 8' long, 54" - 96" diameter.



Friction Collars

CFFE offers rental and sale of Friction Collars. Round Collars have a rated capacity up to 50,000 lbs per side. Square / Rectangular have a rated capacity of up to 25,000 lbs per side.



Post Shores



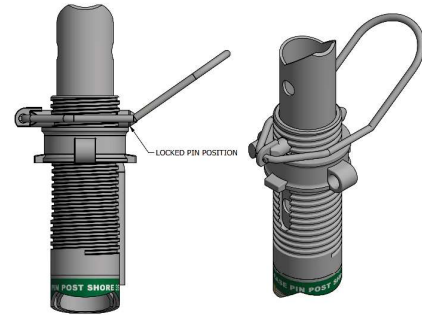
Post Shores and HD Post Shores can be used for supporting deck joists or reshoring existing structures.

Post Shore 350: 6'-6" - 11'-5", SWL 6,445 to 4,400 lbs.

Post Shore 550: 11' - 18', SWL 9,367 to 2,732 lbs.

HD Post Shore 350: 7' - 11', SWL depending on the extended length, of up to 10,000 lbs.

HD Post Shore 450: 8'6" to 14'6", SWL depending on the extended length, from 8,366 to 10,000 lbs.



Set the Post Shore height with a captured Quick-Release Pin and threaded collar. Locked pin position pictured.

SPAN-X Beams



The SPAN-X is an adjustable horizontal beam made up of an aluminum box and a telescoping I-beam that provides a wide range of adjustment.

This **self-spanning** support can be positioned along the top of a concrete wall, shelf angle or stringer. The clear span provides a more accessible work space underneath, reducing conflict between trades.



Shoring

This shoring and deck support system is designed for an optimum strength-to-weight ratio, with a tested rating of 10K leg. The system components include frames, screw jacks, crossbraces, U-heads and coupling pins. The frame heights are 3', 4', 5' and 6', and the widths are 2' and 4'. The system is quickly assembled and easily reconfigured for a wide range of shoring and deck support applications.



Tube Mills

Tube Mills produce load-bearing beams that are assembled as scaffolding, handrails, agricultural gates & panels and other customer specific items. for making

Square tube in 1", 1-1/4", 1-1/2", and 2": 16 ga, 14ga, 12ga, and 11ga. Round tube 1" - 2" diameter in 18ga, 16ga, 14ga, 13ga, 12ga, and 11ga.



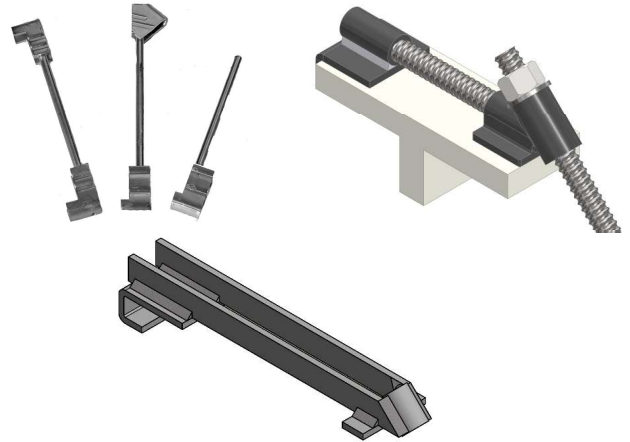
Square and round HR, HRPO, and Pre-Galvanized tube.

Interior / Exterior Hangers



Interior Hangers are placed on the top of the interior bay beams and usually have two 90° end clips to support the suspended formwork between the beams. There are several types including Type 1, 4, 7, 8, 9, S, C, Broached, Precast, Adjustable and hook.

Exterior Hangers are used on the fascia beams and generally have a 45° end to support the overhang and a 90° end to support the interior. There are several types including Type 1-A, 2-A, 4-A, 4-AB, 4-APR, 8-A, 9-A, 9-AB, and 9-APR. All Hangers must support the live load, dead load, forming load and/or finishing load.

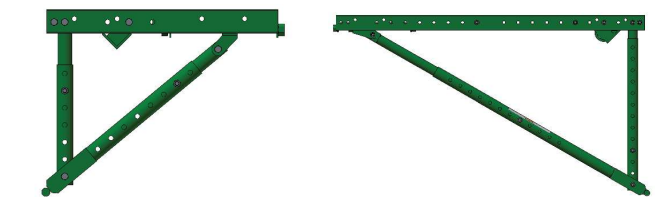


Bridge Overhang Brackets



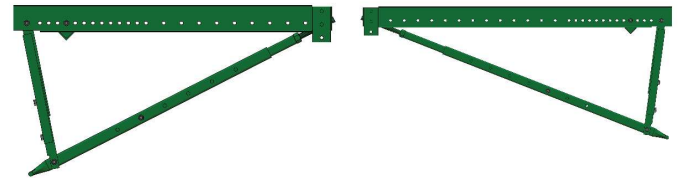
The Bridge Overhang Bracket adjusts to fit both structural steel and precast concrete beams. The size and shape of a bracket is adjusted by changing the vertical and diagonal legs to meet the specific overhang requirements. Brackets can be preset, then moved into position to speed forming operations.

The Extension channel for wider overhangs, Guard Rail Receptacle for 2x4 lumber uprights, and Wall Plate for wall mounting, are options adding to the versatility of the Bridge Overhang Bracket.



JR BOB - 27" channel

BOB - 54" channel



HDBOB - 72" channel

HDL BOB - 90" channel

Maximum Strength Deformed GFRP Fiberglass Reinforcement Bar



The only integrally ribbed or deformed maximum strength GFRP fiberglass reinforcement bar. 1/4th the weight and CO₂ footprint compared to steel, while 3 times stronger.

Some benefits include enhanced jobsite safety, significant savings in transportation and handling costs, non-corrosive, non-conductive, suited for any environmental exposure.

Straight Bar & Bent Bar for any size project.

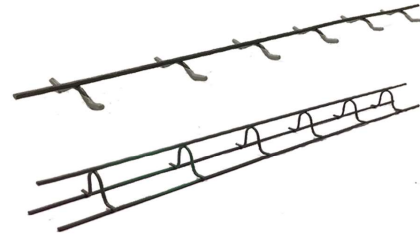


Slab Bolster



Slab Bolster is used to support rebar and mesh at the proper elevation in concrete slabs. The legs are spaced 5" on-center and spot-welded to resist bending.

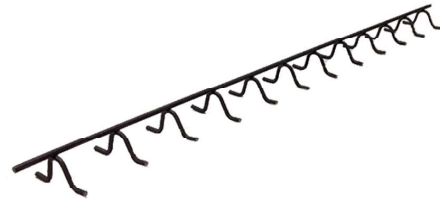
When a runner wire is spot-welded to the feet along the full length it becomes Slab Bolster Upper. This provides support on soft surfaces or upper rebar levels.



Beam Bolster



Beam Bolster is used to support rebar at the proper elevation in beam form soffits. Legs are spaced 2-1/2" on-center and spot-welded to resist bending.



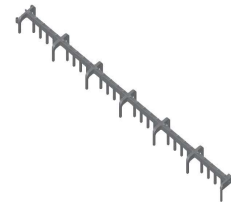
Standard heights from 3/4" to 4", in 1/4" increments

Plastic Slab Bolster



Plastic slab bolster with end lock for connecting longer lengths and secure fit.

Available in 3/4", 1", 1-1/2", and 2"



High Chairs



Individual High Chairs are used to span and straddle lower rebar, while "cradling" upper level rebar at the proper elevation. The legs are spot-welded to resist bending under rebar load.



Slab-On-Grade Chair



Integrated sand plate for support and stability on soft surfaces.



Slab-On-Grade Chair

Uni Chair with Ring



Straddle lower level rebar and support upper mats in tilt-up panels.



Uni Chair

Basket Dowel

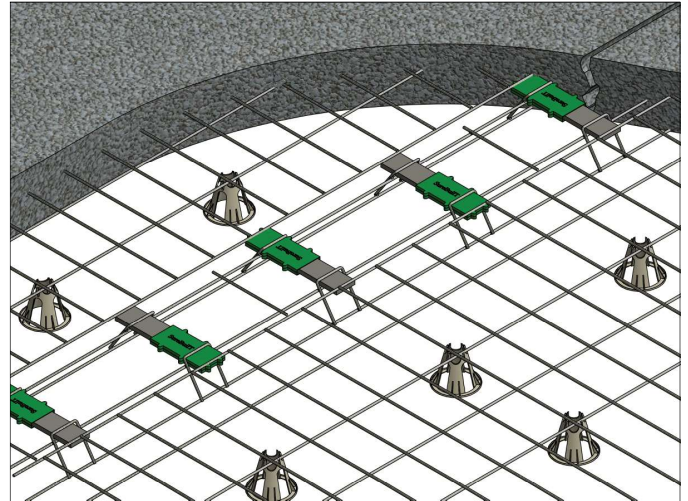


The Dowel Basket provides pre-planned joint stability, load transfer and smooth transition, in a single cost-effective assembly.

A properly installed Dowel Basket minimizes joint spalling, eliminates tripping hazards and improves joint filler appearance.

The Dowel Basket is recommended for joints up to 0.20" wide and is suitable for all types of ground level concrete floors, slabs or pavements.

(Dowel Basket sleeve U.S. Patent Pending)



Taper Dowel



The size and shape of the Taper Dowel provides joint stability, load transfer and smooth transition, without restraining concrete floor movement.

The plastic sleeve fastens quickly to edge forms before concrete placement and the steel plate slides into the sleeve opening in preparation for the adjoining slab.

A properly installed Taper Dowel is recommended for joints up to 0.20" wide and is suitable for all types of ground level concrete slabs, such as jointed floors, flatwork and pavement.



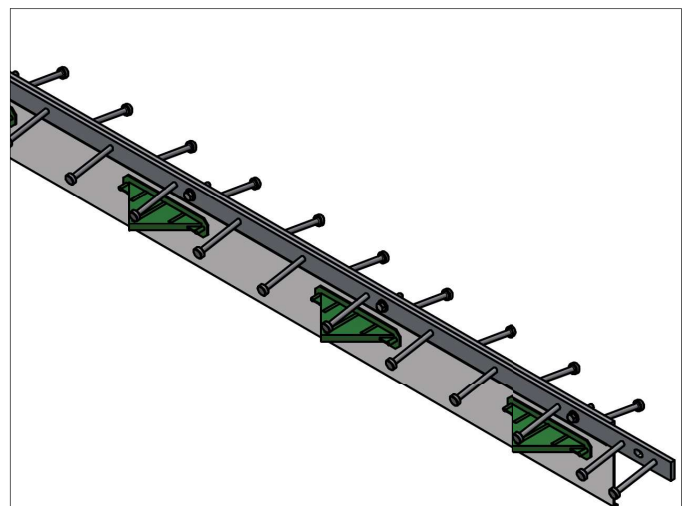
HD Steel Edge Nosing



High-traffic concrete floors and pavements require precise load transfer, smooth transition and joint protection. All of these requirements can be satisfied with the Steel Edge Nosing assembly.

The full-depth 10'-6" assembly includes steel nosing, dowel plates and channel for a complete joint installation. The leave-in-place design eliminates conventional slab edge forming costs.

The steel nosing, with studs tied to the concrete slab reinforcement, provides joint edge protection and a smooth transition from one concrete section to another.

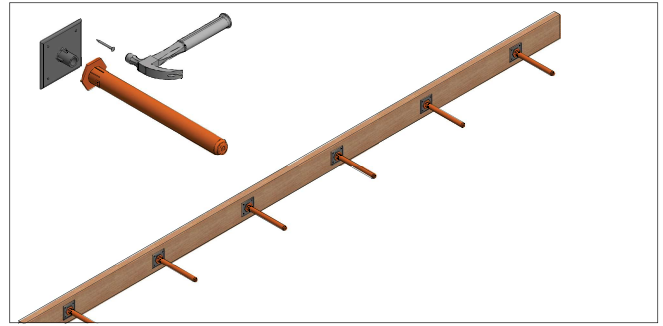


Dowel Sleeve - Construction Joint



Positioning smooth dowels with lumber edge forms is easy with the plastic Dowel Sleeve and Nailing Plate. The plate is attached to the form at the required spacing and the sleeve is pushed onto the plate before concrete placement.

When the lumber edge forms are removed, a smooth steel dowel is placed into each sleeve for the adjoining concrete slab.

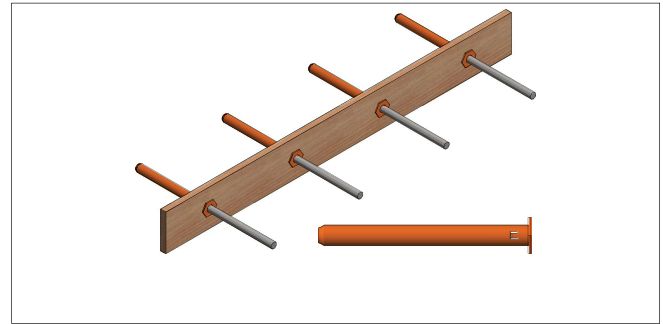


Dowel Sleeve - Expansion Joint



Expansion boards are predrilled to the proper hole size and spacing to meet specifications. Once the predrilled boards are in position, the sleeves are quickly snapped into place. Integrated collar tabs keep each sleeve in position and perpendicular to the board face.

Normal concrete expansion and contraction takes place as the smooth steel dowel bar slides inside the sleeve.



Plastic sleeves accurately position and align smooth steel dowels in the adjoining concrete section.

Paving Dowels & Baskets

Rebar fabrication is an extremely important process that should be done right. We proudly supply, detail, and fabricate rebar for all our customers with exact specifications and project details in mind to meet all your project requirements.

Baskets: Contraction, Expansion, Rebar, and Tapered Dowel Bars: 1/2" - 2" Cold Saw Cut for Clean Ends



Baskets sized is based on pavement thickness, lane width, dowel bar size, and spacing

Epoxy Coated Rebar

Rebar fabrication is an extremely important process that should be done right. We proudly supply, detail, and fabricate rebar for all our customers with exact specifications and project details in mind to meet all your project needs.

CRSI Certified Coater - Rebar Sizes: 20' - 60' / #3 - #18



Epoxy Coating Facility with Shear Line Cutter

Steel Stakes



Each steel stake is hot-rolled with a “pencil” point, allowing it to be easily driven or hammered into clay, rock, or compacted soil. The holes on the stakes are drilled in a spiral, meaning a nail hole will always line up with the form for quick nailing.



Metal Rib



This leave-in-place sheet is typically used to form footings, bulkheads, grade beams, pile caps and blindside walls. The expanded metal sheets are easy to cut, lap, splice, bend and pierce, minimizing related forming costs.



Rebar Safety Cap



The patented design (U.S. Patent No. 8,776,464 B2) is a proven way to prevent injury on work sites and meets the OSHA 1926.70(b) requirement. Each Rebar Safety Cap is internally reinforced with a steel plate, providing additional protection against falls that occur from an angle. The Rebar Safety Cap fits rebar sizes #3 through #8, or 3/8” to 1” in bar diameter.



HD Egress Ladders



HD Egress Ladders can be used to escape from the basement or as an access option for emergency personnel. IRC code requires ladders in wells deeper than 44”. Standard HD Egress Ladders are 4’, 5’ and 6’ lengths.



Grates



High-quality Grates keep people and objects from falling into the Window Well. The Grate is made of rolled angle iron steel, and welded steel safety bars.

Premium mesh grates are also available to keep leaves and other debris out of the Window Wells.



Line Card

Bar Support *

Slab Bolster
Slab Bolster Upper
Individual High Chair
Continuous High Chair
Continuous High Chair Upper
Beam Bolster

Bridge Deck Forming

Bridge Overhang Bracket *
Curing Blankets
Exterior Hangers *
Exterior Half Hangers *
Interior Hangers *
Interior Half Hanger *
Adjustable Joist Hanger

Coil Rod *

1/2" Coil Rod
3/4" Coil Rod
1" Coil Rod
1-1/4" Coil Rod
15mm Coil Rod
20mm Coil Rod

Coil Ties *

1/2" Coil Ties
3/4" Coil Ties
1" Coil Ties
1-1/4" Coil Ties

Concrete Hoppers

Hoppers
Elephant Trunk
Tremie Pipe
Steel Collar

Floor Systems *

Dowel Basket
Taper Dowel
Steel Edge Nosing
VaporStop & Tape

Form Liners *

HIPS - Single Use
ABS - Up to 10 Uses
PE - Up to 40 - 50 Uses
PPE - Up to 100+ Uses

Form Ties *

HD Loop Ties
HD Gang Loop Ties
X-Flat Ties
Base Ties
Aluminum Form Ties

Heavy Forming *

SOLO Clamp Form 1500PSF
SureCurve Radius Form
Sure Beam
Articulated Waler
Steel Circular Column Form
Taper Ties
She-Bolts
Inner Units
Euro Taper Ties
Euro She-Bolts
Flat Washers

GFRP Reinforcement Bar *

#2-#11 Reinforcement Bar

Metal Rib *

Expanded Metal Mesh

Modular Braces *

Type 6-5/8"
Type 8-5/8"

Pipe Braces *

Plywood Forming *

Coil Ties
Pencil Rod and Clamps
Self-Centering Ties
Snap Ties

Precast

Anchor Rail HD
Coil Inserts *
Column Wall Edge Connector *
Ferrule Inserts *
Helical Ground Anchors *
Ring and Cable Lifters
Slant Anchor *
Straight Leg Anchor *
Wall Base Connector *
Wire / FRP Truss *

Rebar Safety Caps

Rebar Splicing

Groutec
Unitec

Self-Riser System *

Shoring *

Cross Braces
Frames
Post Shores
Screw Jacks

Snap Ties *

SPAN-X Beams *

Staybox Rebar Splicing *

Steel Stakes *

3/4" Stakes
7/8" Stakes

Stud Rail DSA & DSAR *

Thermal Break

SurePly™ Handset Forming *

Panels and Fillers
Hardware
HD Loop Ties
X-Flat Ties
Birch Plywood

Tilt-Up

Brace Inserts *
Helical Ground Anchors *
Lifting Hardware
ProLift Inserts *
Slant Anchor *
SureLift (SL) Inserts *
Edge Form Brackets
Construction Adhesive *
FRP Truss / Connectors *
XL Lift Inserts *

Walers *

Butt Plate
Double Channel

* Products are Made in the USA or available to be made in the USA

SureBuilt
Concrete Forms & Accessories

2525 Armitage Ave
Melrose Park, IL 60160
708-493-9569
www.surebuilt-usa.com

