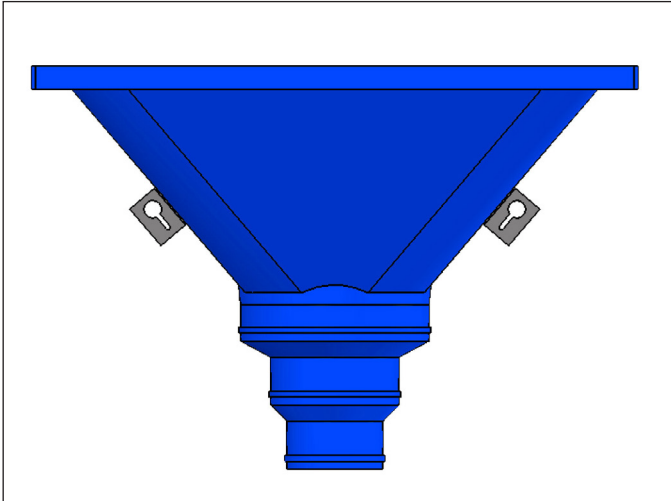
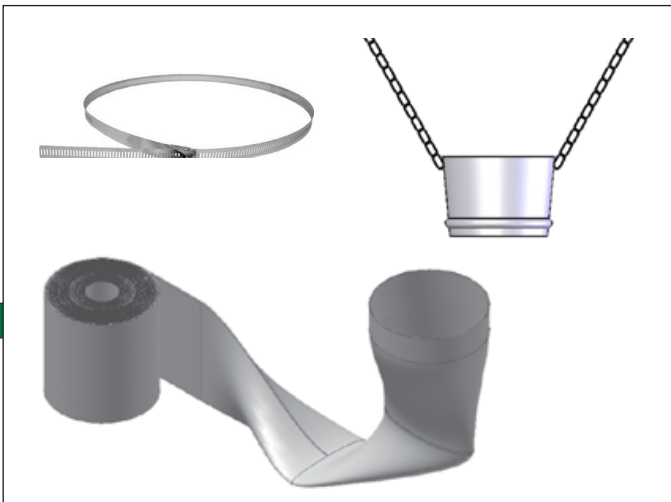
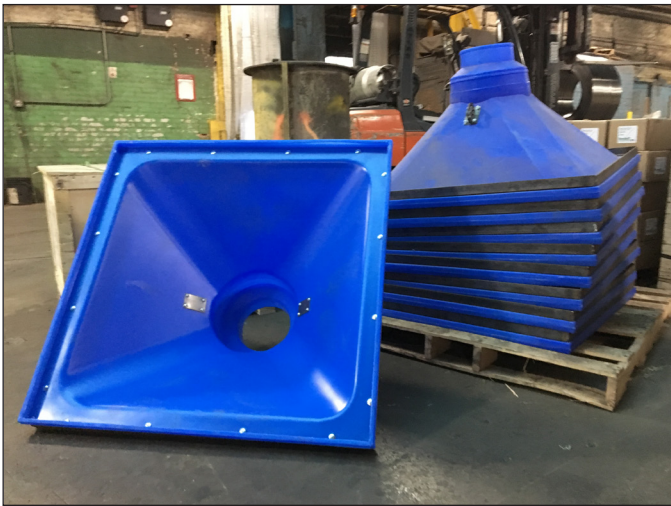


SureBuilt

Concrete Forms & Accessories

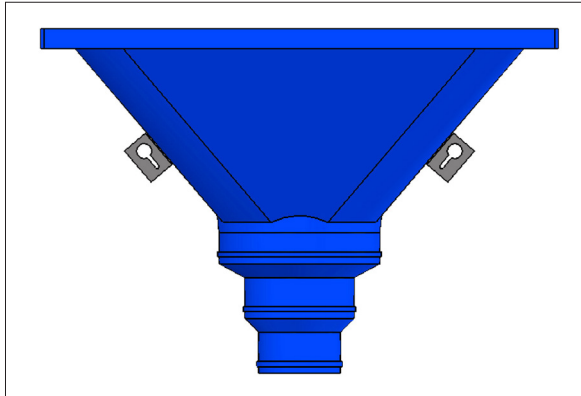


Concrete Hoppers and Accessories

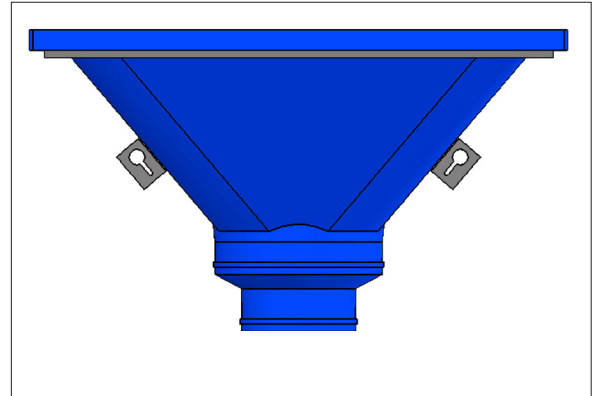


Concrete Hoppers

Handle and place concrete faster and more accurately with a Concrete Hopper. Each hopper is rotationally molded with industrial grade polyethylene to create a sturdy and easy-to-clean funnel shape. The standard design is lighter in weight for easy handling and has optional 6"-8"-12" openings. The heavy-duty design is reinforced at the top with a steel frame and has optional 8"-12" openings. Both designs have an upset near the opening for clamping Elephant Trunk and steel attachment points for the accessory chains.



Concrete Hopper - 6"-8"-12" openings



Concrete Hopper HD - 8"-12" openings

Concrete Hopper*		
Part No.	Description	Details
SBR5030C	SB Concrete Hopper 36"x36"	6"-8"-12" openings
SBHF368C	SB Concrete Hopper HD 36"x36"	8"-12" openings

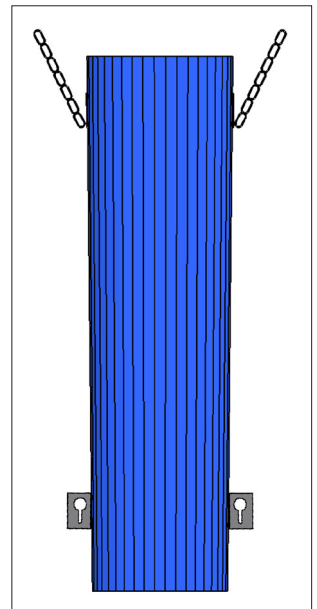
* Follow local code requirements regarding concrete washout.

Tremie Pipe

The Tremie Pipe is also molded with industrial grade polyethylene to create a sturdy and easy-to-clean drop chute for concrete placement. The pipe can be attached to a Concrete Hopper using the connecting chains near one end. The other end of the pipe has steel attachment points which can be used for connecting another Tremie Pipe or Steel Collar.

Tremie Pipe*		
Part No.	Description	Details
SBR5050C	SB Tremie Pipe 8" dia x 4' length	w/ connecting chain
SBR5040C	SB Tremie Pipe 12" dia x 4' length	w/ connecting chain

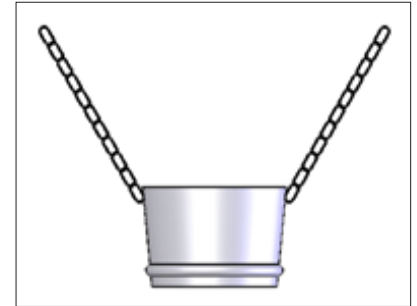
* Do not use more than a 25' length to avoid concrete segregation.



Tremie Pipe connects to funnel with chains.

Steel Collars

A Steel Collar is attached to the Tremie Pipe with the connecting chains. The collar provides a transition to the Elephant Trunk needed to control concrete placement. Each collar is formed with an upset near the opening for clamping the trunk.



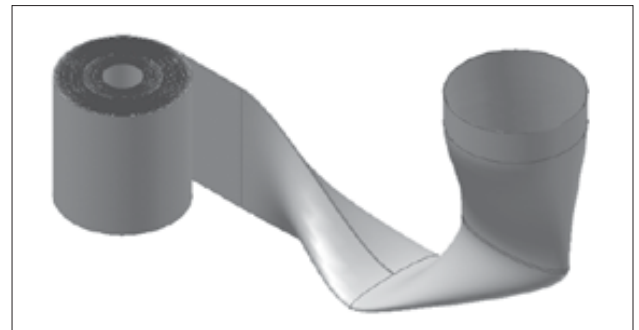
Steel Collar connects to the Tremie Pipe with chains.

Steel Collar*		
Part No.	Description	Details
SBEC6	SB Elephant Trunk Collar 6"	w/ connecting chain
SBEC8	SB Elephant Trunk Collar 8"	w/ connecting chain
SBEC12	SB Elephant Trunk Collar 12'	w/ connecting chain

* Steel Collar opening corresponds to matching trunk dimension.

Elephant Trunk

Elephant Trunk is typically cut-to-length on the site to match concrete placement needs. Longer lengths may be needed to control wall placements, shorter lengths may be needed to control slab placements. After cutting to proper size, the trunk is attached to the Concrete Hopper funnel or Steel Collar with an Adjustable Band Clamp. The trunk and clamp are sleeved over the opening and secured above the upset formed in the hopper funnel or steel collar.



Elephant Trunk controls concrete placement.

Elephant Trunk*		
Part No.	Description	Details
SBET06	SB Elephant Trunk 6"	6" dia x 50' length
SBET08	SB Elephant Trunk 8"	8" dia x 50' length
SBET12	SB Elephant Trunk 12"	12" dia x 50' length
SBETBC	SB Adjustable Band Clamp	fits 6"-8"-12" collars

* Do not use more than a 25' length to avoid concrete segregation.



Adjustable Band Clamp secures trunk to collar.

Bar Support – Wire slab bolsters and high chairs, with optional epoxy-coat, plastic-dip, plastic-tip or plate, to meet almost any slab requirement.

Bridge Deck – Overhang brackets and hangers provide an efficient deck forming solution for precast concrete or steel I-beam bridge structures.

Coil Ties – 2-Strut and 4-Strut designs, in standard and heavy-duty capacities, with optional cones, waterseals or custom combination, for job-built forming.

Dowels – Plates, sleeves, baskets and joint nosings for high-performance concrete floors.

Euro Rod – 15mm and 20mm taper ties, she-bolts, inner ties, washers and wing nuts compatible with European-brand forming systems.

Metal Rib – Leave-in-place, expanded galvanized mesh to form footings, bulkheads, grade beams, pier caps and blindside walls.

Pipe Braces – Contractor-preferred braces, with rated capacities and lengths ranging from 7'6" to 62'6", for almost any forming application.

Precast – Inserts, anchors, connectors and lifting systems for efficient precast concrete production.

Self-Riser – Integrated hydraulic system for multi-story building cores that virtually eliminates crane time.

Shoring – A conventional 12K load/leg system, with base plates, cross braces, screw jacks and U-heads, for productive deck support.

Snap Ties – Ties and brackets, with $\frac{3}{4}$ " plywood and 2x4 lumber, create a simple and effective plywood forming system.

Staybox – A pre-engineered and pre-assembled rebar keyway that simplifies forming at wall and deck intersections.

Stud Rail – A reinforced column-to-deck connection that reduces shearing, transfers load further into the slab and eliminates column capitals.

SureCurve™ RC – Concrete tanks and curved walls quickly take shape with this flexible gangform system.

SurePly™ – An industry-recognized handset system, with more than 80 standard panel and filler sizes, for almost any forming application.

Tilt-Up – A start-to-finish system of lifting inserts, plates and hardware for tilt-up panel construction.

Walers – Double channel walers align panels, carry taper tie loads and maximize the surface area of almost any gang.