

SureBuilt

Concrete Forms & Accessories



Self-Riser System





Each SureCore system is customized to meet your specific project requirements.



Engineered and designed for any size core your project requires.



With the flip of a few switches, all interior and exterior formwork rises to the next level.

High-rise cores quickly take shape with the SureCore™ Self-Riser

The SureCore™ Self-Riser System is a cost-effective core forming method, reducing labor, and increasing productivity. This system allows core formwork to be lifted without a crane. Simply flipping a few switches moves the entire assembly, including platforms, plus interior and exterior formwork, up another story.

“The jumping process is so simple...we’ve been able to move quickly from floor to floor...”

Hydraulic cylinders lift the grid beams, working platforms, placing boom, interior forms, and exterior forms. During that time, the crane is available for other important tasks.

When the system is used with specially designed Stripping Corners, no corner reassembly is required on the interior form. The amount of stripping space required can be as little as one inch and the core system will still rise smoothly.

Cores can be poured simultaneously with the slab or advance ahead of the floor construction.

The high load capacity of the gantry platform provides a large storage area for small equipment, tool chests, and other materials on top of the advancing core.

Placing the concrete from the working platform through the SureBuilt Upper Deck Grate, rather than hinged hatches atop the core, provides safer working conditions.

The use of Taper Ties means no forming hardware is sacrificed, reducing costs and increasing productivity.

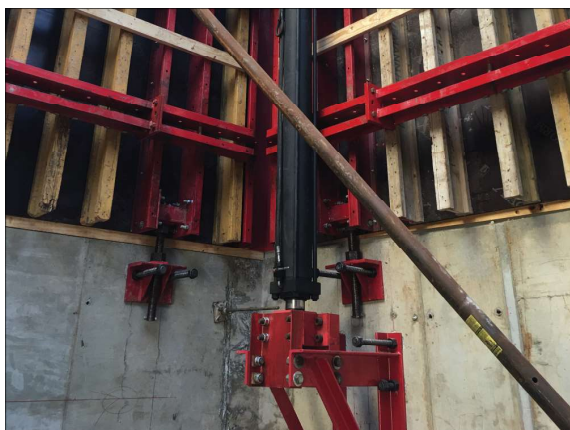
The SureCore™ Self-Riser System allows you to construct high-rise cores faster and more efficiently than other conventional core forming construction methods.



Gangforms are designed and preassembled before being delivered to the job site.



The forms are crane handled for the initial pour, but become part of the Self-Riser System for the remaining stories.



Hydraulic cylinders attach to a landing bracket anchored to the interior wall of the core.

Crane-free and pain-free approach to elevator and stairwell core forming

The SureCore™ Self-Riser system reduces labor costs, set-up time, and boosts efficiency because contractors receive pre-assembled gangs and do not need to build forms on the job site.

Elevator and stairwell core forms are customized for each project and pre-assembled for installation at the starter wall of the core. The system includes:

- Hydraulic cylinders
- Plumbing braces
- Wall landing brackets
- Grid beam support
- Control panel
- Form trolleys

Once the cylinder jack brackets and wall form landing brackets are installed, the interior forms are set in place. Steel grid beams are attached to support brackets and exterior forms are hung from trolleys supported by the grid beams.

Hydraulic ram units anchored to the previous pour level elevate the entire grid beam system to the next pour level. These single stroke units can move the entire Self Riser System up to 20' - reducing insert and labor costs, while greatly improving overall cycle time.

“The time to move the forms is about half of what it normally would have taken...”

Trailing platforms allow access to the previously poured concrete. The exterior forms supported by the overhead grid beams can easily be retracted. This provides clearance for form cleaning and rebar placement.

Completely self-sufficient, the SureCore™ Self-Riser Core System can cycle every 2 - 3 days, without a tower crane. Other phased activities stay on track and the overall project becomes more efficient and remains on schedule.

Line Card



Bar Support *

- Slab Bolster
- Slab Bolster Upper
- Individual High Chair
- Continuous High Chair
- Continuous High Chair Upper
- Beam Bolster

Bridge Deck Forming

- Bridge Overhang Bracket *
- Curing Blankets
- Exterior Hangers *
- Exterior Half Hangers *
- Interior Hangers *
- Interior Half Hanger *
- Adjustable Joist Hanger

Coil Rod *

- 1/2", 3/4", 1" Coil Rod
- 1-1/4" Coil Rod
- 15mm, 20mm Coil Rod

Coil Ties *

- 1/2", 3/4", 1" Coil Ties
- 1-1/4" Coil Ties

Concrete Hoppers

- Hoppers
- Elephant Trunk
- Tremie Pipe
- Steel Collar

Floor Systems *

- Dowel Basket
- Taper Dowel
- Steel Edge Nosing
- VaporStop & Tape

Form Liners *

- HIPS - Single Use
- ABS - Up to 10 Uses
- PE - Up to 40 - 50 Uses
- PPE - Up to 100+ Uses

Form Ties *

- HD Loop Ties
- HD Gang Loop Ties

Form Ties *

- X-Flat Ties
- Base Ties
- Aluminum Form Ties

Heavy Forming *

- SOLO Clamp Form 1500PSF
- SureCurve Radius Form
- Sure Beam
- Articulated Waler
- Steel Circular Column Form
- Taper Ties
- She-Bolts
- Inner Units
- Euro Taper Ties
- Euro She-Bolts
- Flat Washers

GFRP Reinforcement Bar *

- #2-#11 Reinforcement Bar

Metal Rib *

- Expanded Metal Mesh

Modular Braces *

- Type 6-5/8"
- Type 8-5/8"

Pipe Braces *

Plywood Forming *

- Coil Ties
- Pencil Rod and Clamps
- Self-Centering Ties
- Snap Ties

Precast

- Anchor Rail HD
- Coil Inserts *
- Column Wall Edge Connector *
- Ferrule Inserts *
- Helical Ground Anchors *
- Ring and Cable Lifters
- Slant Anchor *
- Straight Leg Anchor *
- Wall Base Connector *
- Wire / FRP Truss *

Rebar Safety Caps

Rebar Splicing *

- Groutec
- Unitec

Self-Riser System *

Shoring *

- Cross Braces
- Frames
- Post Shores
- Screw Jacks

Snap Ties *

SPAN-X Beams *

Staybox Rebar Splicing *

Steel Stakes *

- 3/4" Stakes
- 7/8" Stakes

Stud Rail DSA & DSAR *

- Thermal Break

SurePly™ Handset Forming *

- Panels and Fillers
- Hardware
- HD Loop Ties
- X-Flat Ties
- Birch Plywood

Tilt-Up

- Brace Inserts *
- Helical Ground Anchors *
- Lifting Hardware
- ProLift Inserts *
- Slant Anchor *
- SureLift (SL) Inserts *
- Edge Form Brackets
- Construction Adhesive *
- FRP Truss / Connectors *
- XL Lift Inserts *

Walers *

- Butt Plate
- Double Channel

* Products are Made in the USA or available to be made in the USA

SureBuilt
Concrete Forms & Accessories

2525 Armitage Ave
Melrose Park, IL 60160
708-493-9569
www.surebuilt-usa.com

