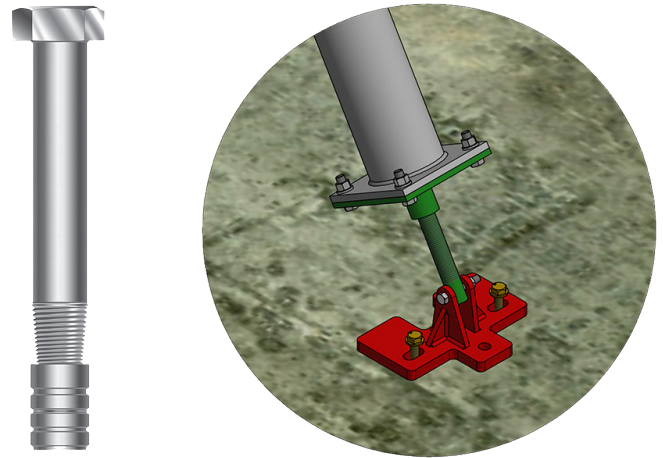


Taper Bolt

Reusable bolt and disposable expander nut for temporary anchor installations

- Removable bolt for temporary anchoring.
- Required hole diameter equals bolt dimension.
- Expander nut adjusts for variation in hole size.
- Taper Bolt assembly will work in “bottomless” hole.
- Torqued to obtain high-strength shear load value.
- Withstands static and vibratory loads.
- Bolt can be removed, cleaned and reused.



The Taper Bolt and Expander Nut are ideal for anchoring and then removing tilt-up braces.

Taper Bolt and Nut*								
Part No.	Bolt Size**	Min Slab	Min Torque (ft/lbs)	Min Embed	Ultimate***			
					Single Bolt		Double Bolt (10" OC)	
					Tension (lbs)	Shear (lbs)	Tension (lbs)	Shear (lbs)
SBTB34418	3/4"x4-1/8"	5"	250	3-3/8"	7,200	14,440	14,800	29,700
SBTB34512	3/4"x5-1/2"	6"	250	4-1/2"	11,900	24,800	21,600	43,000
SBTB347	3/4"x7"	7"	250	6"	11,900	27,916	23,800	55,800
SBTB1558	1"x5-5/8"	6"	550	4-5/8"	12,900	25,900	22,300	44,600
SBTB1634	1"x6-3/4"	7"	550	5-3/4"	17,900	35,950	28,300	56,700
SBTB1714	1"x7-1/4"	8"	550	6-1/4"	20,300	36,257	31,200	62,400
SBTBN34	3/4" Nut							
SBTBN1	1" Nut							

* Standard Grade 5, zinc-plated finish. Other metals and finishes available on request.

** Required hole diameter equals bolt dimensions.

*** Ultimate load in 3,000 psi concrete. Tested by Pittsburgh Testing Laboratory PG-2170.

SureBuilt
Concrete Forms & Accessories

840 South 25th Ave
Bellwood, IL 60104
708-493-9569
www.surebuilt-usa.com

Taper Bolt Installation

1. Drill a hole the same diameter as the Taper Bolt using the Brace Shoe as a template.
2. Clean hole and surrounding area with compressed air.
3. Drive Taper Bolt and Expander Nut into place leaving clearance for subsequent tightening.
4. Tighten Taper Bolt to recommended torque setting to expand nut.
5. For multiple Taper Bolt installation use an Impact Wrench for productivity.
6. Unscrew the Taper Bolt for removal. Expander Nut remains in hole.
7. Clean, lubricate and save the Taper Bolt for the next installation.

